

2020 Design Live 12.5.1

Release Notes



2020 Design Live **12**

Introduction

This document identifies the fixed issues added to version 12.5.1 as well as new functionalities and bug fixes included in recent releases

Fixed Issue

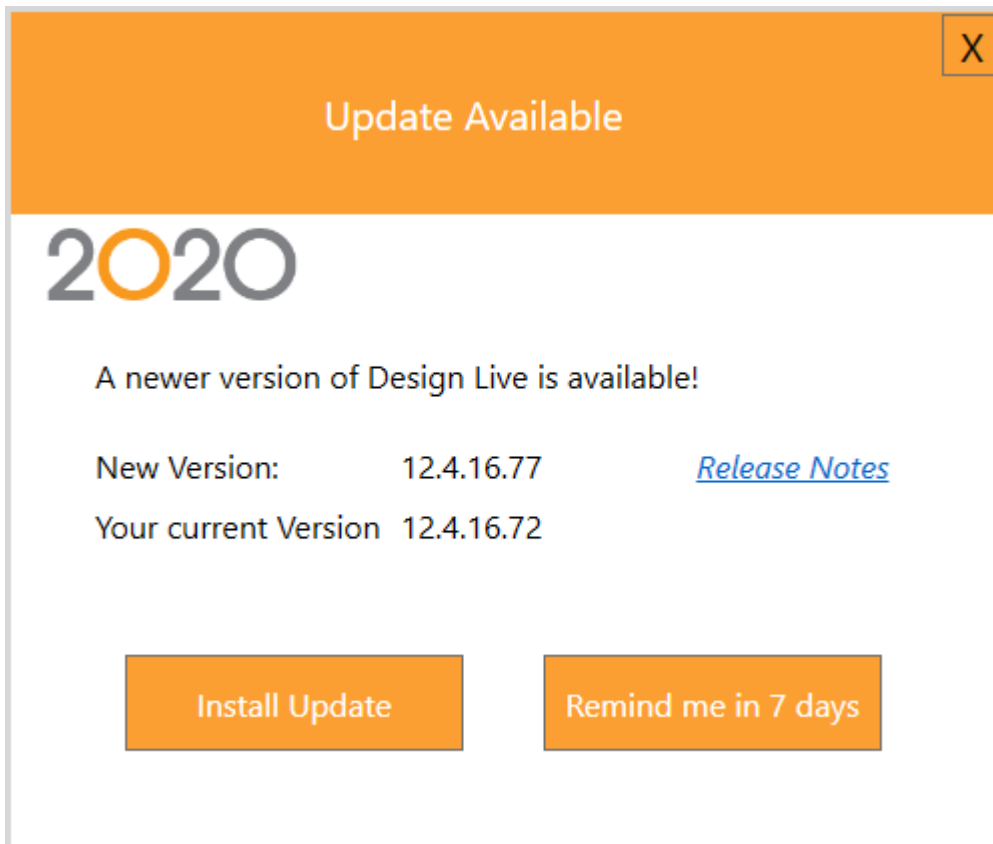
- Fixed a stability issue related to placement of countertops

Recent Releases Updates

New Functionalities in V12.5.0

Get notified when an update is available

(Available exclusively in 2020 Design Live)



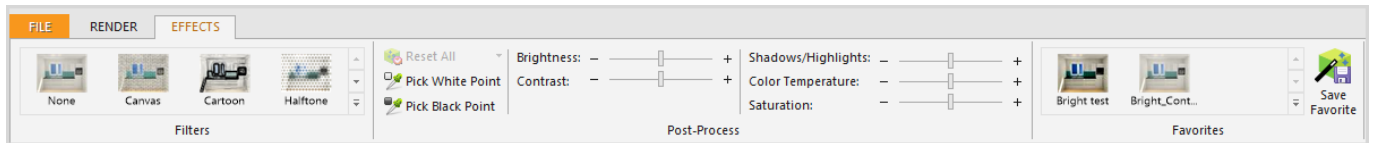
When you launch 2020 Design, a window appears to indicate the availability of a newer version. You can choose to install the update or stay on the current version. You can also get the release notes from this window. Note that you can access this window by clicking **Check for Updates** from the Help ribbon.



EZ Render: Save and recall post-process effects settings

(Available exclusively in 2020 Design Live)

Since 12.4, we have controls for Filters, Brightness, Contrast, Shadows/Highlights, Color Temperature, Saturation, etc. All these settings can now be captured and saved as favorites.



For more details about saving post-process effects settings, see “Quickly adjust the rendering effects of a design without re-rendering” in the 2020 Design Help file.

Changes to CIC settings are reapplied from one computer to another

The changes you made to the CIC settings are reapplied when you access 2020 Design from another computer.

CIC Lights artifacts now emit light

Lighting fixtures from the Cloud emit light in the renderings.

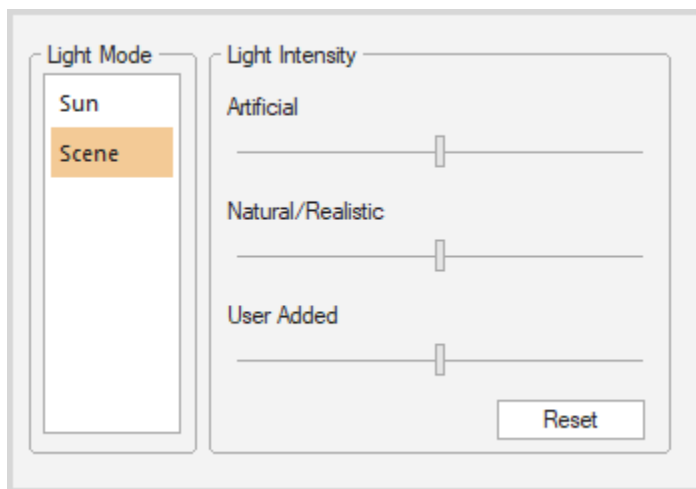


New mechanism for lighting

(Available exclusively in 2020 Design Live)

We've improved usability of light controls by providing the following slider bars:

- **Artificial:** Controls the level of artificial light along walls.
- **Natural/Realistic:** Controls the level of natural light passing through windows and doors containing windows.
- **User Added:** Controls the light intensity of all light items that are placed by the user.

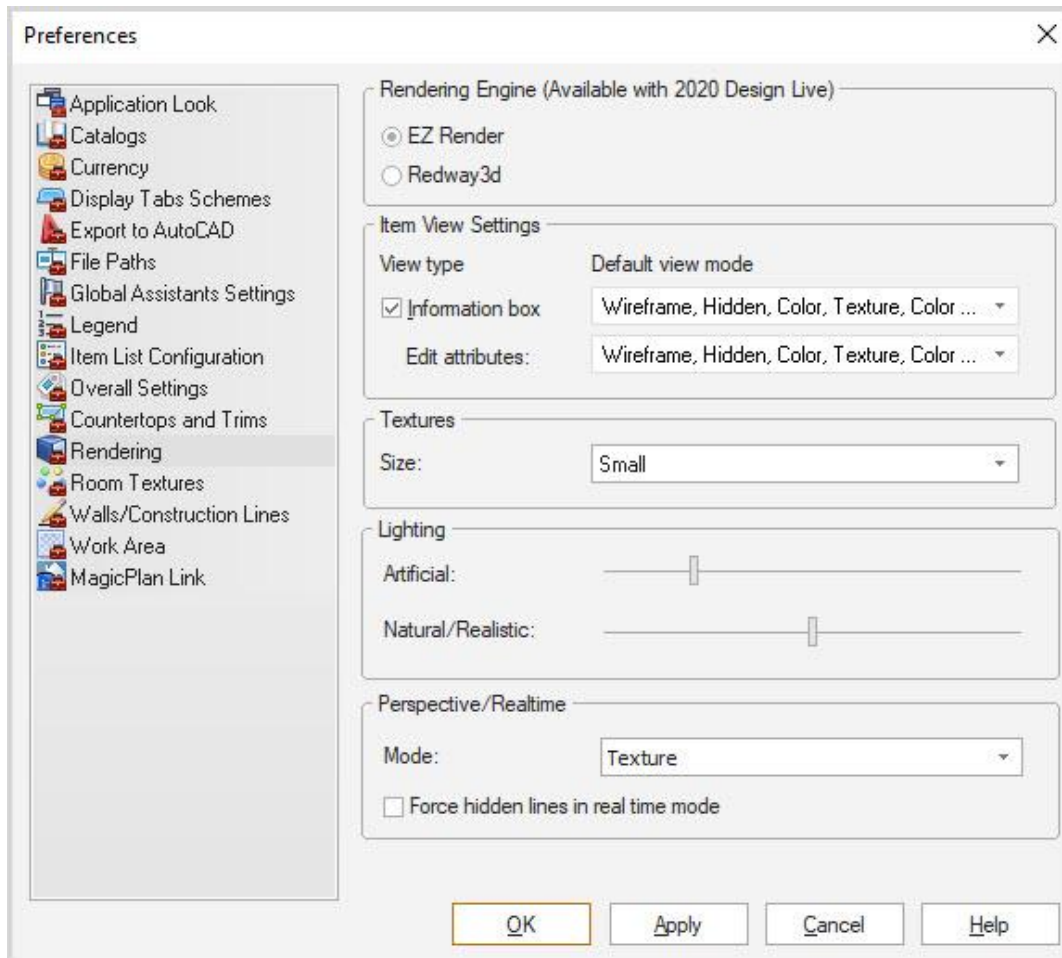


Tip: Users can set their own default light settings in the Rendering Preferences dialog box. See below:

Lighting - Rendering Preferences window

(Available exclusively in 2020 Design Live)

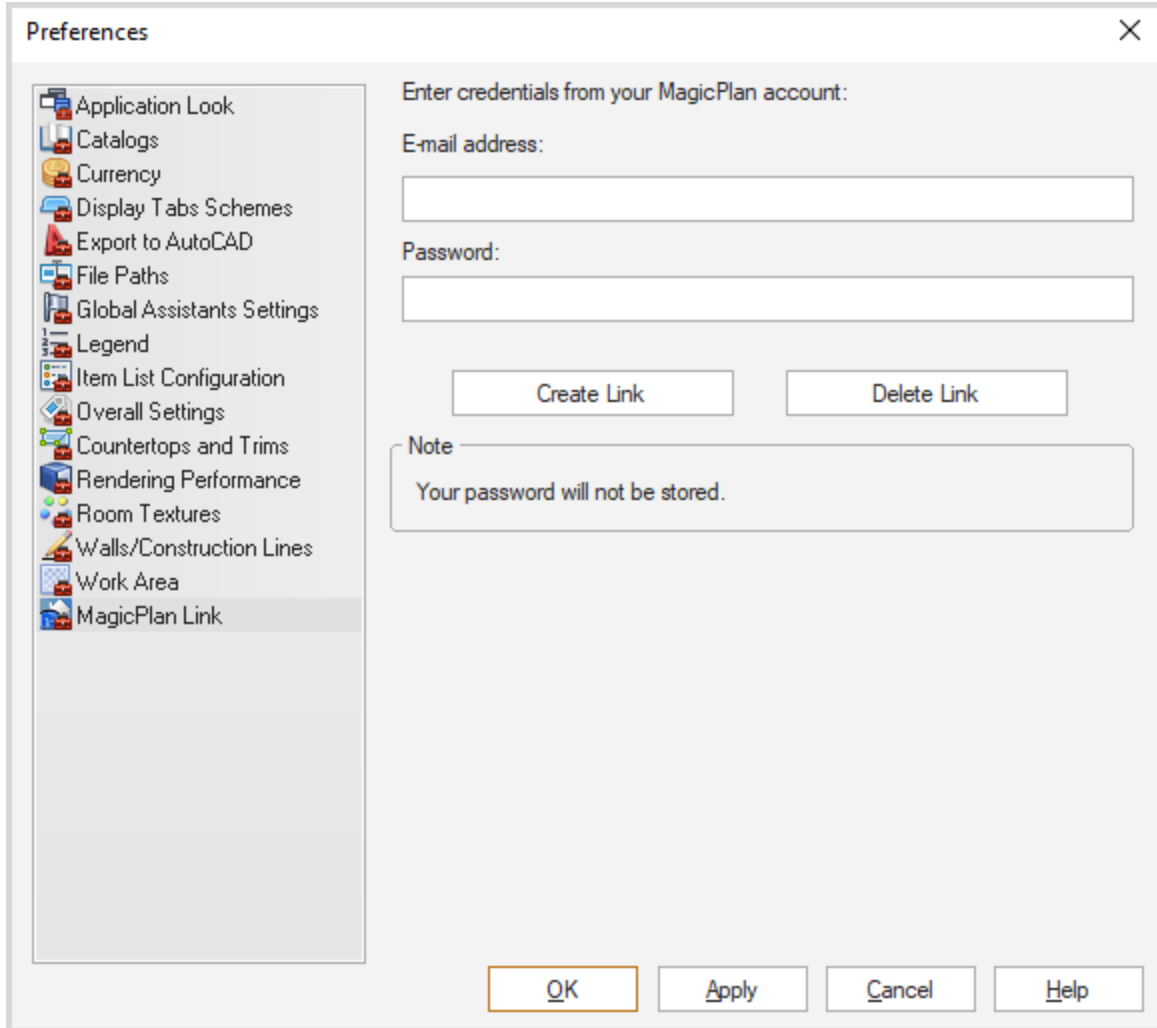
When you check EZ Render in the first section of the Preferences window, you'll see that the Rendering pane (whose name has been changed) was redesigned and divided into two parts: **Lighting** and **Perspective/Realtime** (see screen capture below).



Simplified magicplan account linking

It will no longer be possible to create a magicplan account from within 2020 Design. The credentials (e-mail and password) in the MagicPlan Link pane of the Preferences window are based on magicplan ID. This means that before you can create a link in 2020 Design, you must have created an account from magicplan. The checkbox "already have a magicplan account" has therefore been removed from the preferences window since it is no longer needed.

For more details about installing and creating a magicplan account, see **Create an account from Magicplan and create the link** and **Link to MagicPlan** in the 2020 Design Help file.



Fixed Issues in V12.5.0

- Custom elevation appearing on the floorplan even when turned off
- Grouped items not displaying correctly within rendering when rotated
- Ceiling disappearing under certain configurations
- Decorative items reverting to their original shape and textures upon reload of a project
- 3D user shapes placed under a window were in collision (even if they should not be)
- Idea Center window getting larger
- Centerlines print as full lines (instead of dashed lines) in PDF
- Notes are not being placed and 2020 Design freezes using the “place note on exit” functionality
- 2020 Design Live projects were sometimes not exported properly to 2020 Manager
- Problem when changing the font dimensions in side elevations
- Moldings were sometimes priced incorrectly

Customer Support

Customer Service personnel at 2020 is committed to providing the best possible technical support to all 2020 Design customers.

For customer service, contact your 2020 Design Live supplier or sales representative.

For technical support, consult the 2020 Support Web site at:

<http://www.2020spaces.com/contact-us/>

Trademarks

Published by 2020 © 2020 All rights reserved

The names 2020 all associated trade names used by 2020 are registered, pending or common law trademarks of 2020 and/or of its subsidiaries. Any reference to other brands and products appearing herein are trademarks of their respective holder(s).